



CTA 866/5/PA/NF/S1

Technical Data

Unique Features

High performance, compact size, easy installation, outdoor capable

Electrical Properties

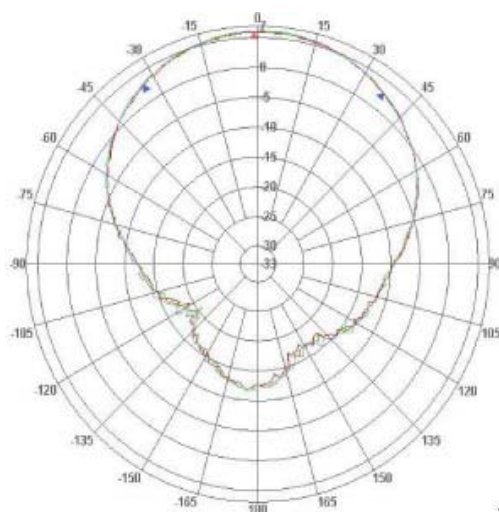
Frequency Range	:	865~869 MHz
Impedance	:	50 Ohms
VSWR	:	1.5 max at resonance
Gain	:	5 dBc
3dB Beamwidth	:	E70 °, H60 °,
Polarization	:	circular
RF Power Handling	:	10 W



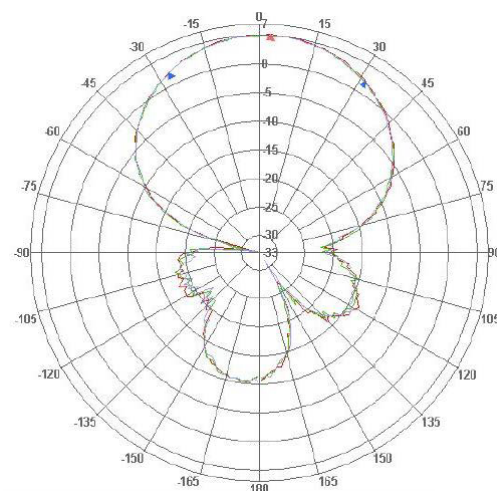
Mechanical Properties

Standard Connector	:	N female
Dimensions (W x H x D)	:	(254 x 254 x 61) mm
Weight	:	1.2 Kg
Color	:	gray
Antenna Cover	:	ABS
Temperature Range	:	-30 °C~+60 °C

Radiation Pattern

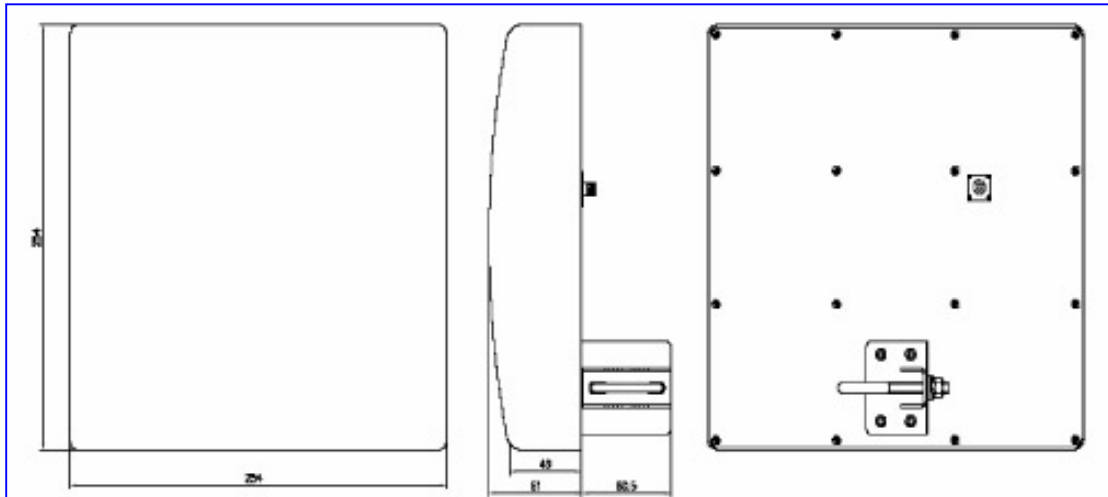


Vertical

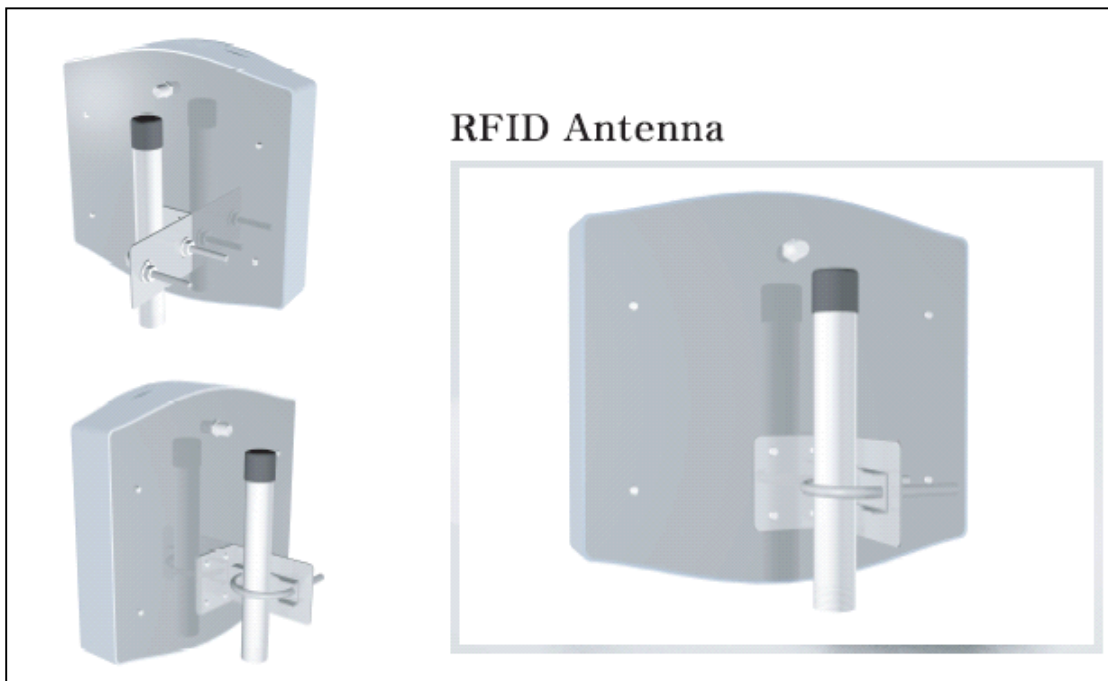


Horizontal

Outline Drawing



Mounting



Specifications subject to change without any notice !

CompoTEK GmbH, Lindwurmstrasse 97A, 80337 München, Germany
Fon:+49 (0)89/5443230, Fax:+49 (0)89/535623
info@compotek.de, www.compotek.de