

1. Device Name TCXO
2. Model Name DSB321SCA
3. Nominal Frequency 16.000 MHz
4. Mass 0.03g max.
5. Absolute Maximum Ratings

	Item	Symbol	Rating	unit
1	Supply Voltage	V _{CC}	-0.3 ~ +6.0	V
2	Storage Temperature Range	T _{STG}	-40 ~ +85	°C

6. Recommended Operating Conditions

	Item	Symbol	min.	typ.	max.	unit
1	Supply Voltage	V _{CC}	+2.4	+2.5	+2.6	V
2	Load Impedance (resistance part) (parallel capacitance)	L _{oad_R}	9	10	11	kΩ
		L _{oad_C}	9	10	11	pF
3	Operable Temperature Range	T _{OPR}	-15	-	+50	°C

7. Electrical Characteristics

(T_A = -15 ~ +50 °C, L_{oad_R}/C=10kΩ//10pF, V_{CC}=+2.5V, unless otherwise noted)

	Item	Conditions	Limits			unit	Notes
			min.	typ	max.		
1	Current Consumption		-	-	1.3	mA	
2	Output Level		0.8	-	-	V _{P-P}	1
3	Symmetry	GND level(DC cut)	40/60	-	60/40	%	
4	Harmonics		-	-	-5	dBc	
5	Frequency Stability						
	1.Tolerance	After 2 times reflow Ref. to Nominal Frequency	-	-	±1.5	ppm	2
	2.vs Temperature	T _A =-15 ~ +50 °C Ref. to Frequency(T _A =+25°C)	-	-	±1.0	ppm	
	3.vs Supply Voltage	V _{CC} =+2.5V±0.1V	-	-	±0.2	ppm	
	4.vs Load Variation	L _{oad_R} /C=(10kΩ//10pF)±10%	-	-	±0.2	ppm	
	5.vs Aging	T _A =Room ambient	-	-	±1.0	ppm/year	
6	Start Up	@90% of final V _{out} level	-	-	2.0	ms	
7	SSB Phase Noise	Relative to F0 level offset 1kHz	-	-	-125	dBc/Hz	

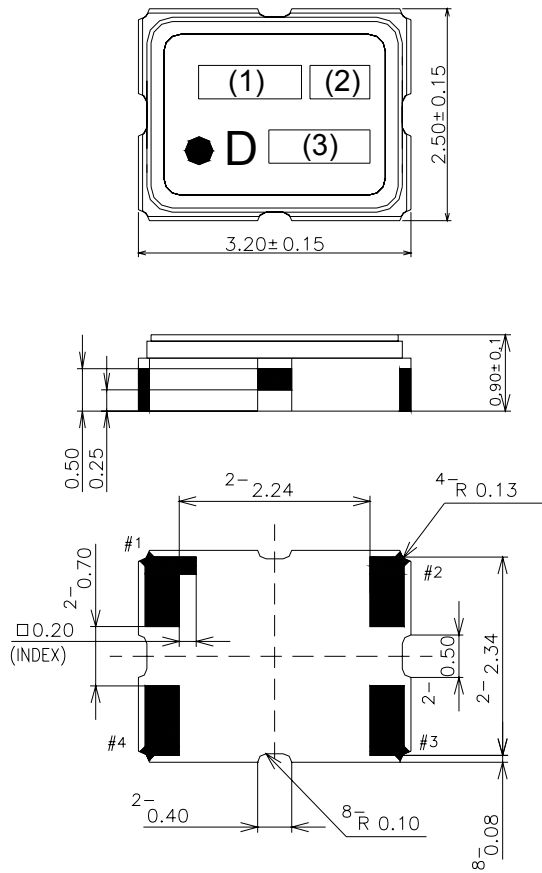
Notes

1. Clipped sine wave (DC-coupled)
2. Please leave after reflow in 2-hour or more at room ambient.

TITLE TCXO SPECIFICATION	Remark		
Date 2008/11/21	Spec. No. ZD04074	Rev. -	Page 1/2

8. Outline, Pin Connections

Outline



Pin Connections

Pin No.	Connection
#1	GND
#2	GND
#3	OUTPUT
#4	V _{cc}

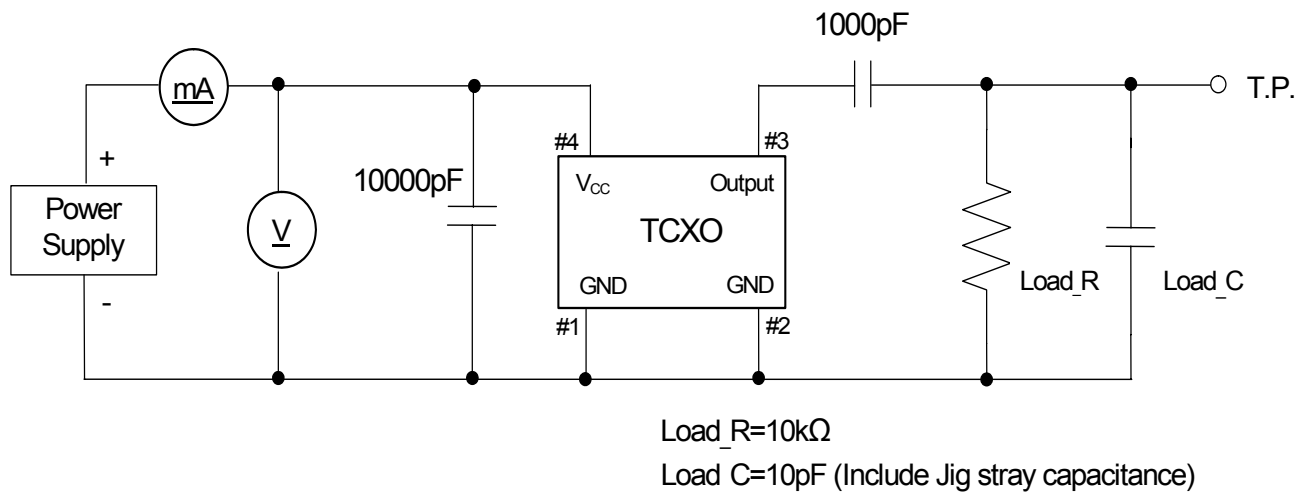
Marking

(1) Frequency 16.00(MHz, 4digits)
 (2) Model code Q
 (3) EIA Date code Year(1digit)+Week(2digits)
 e.g. 2008/1/1 → 801

unit : mm

Dimensional Tolerance: ±0.15
 (Unless otherwise noted)

9. Measurement Circuit



TITLE
TCXO SPECIFICATION

Remark

Date
2008/11/21

Spec. No.
ZD04074

Rev.
-

Page
2/2